

Harnessing Global Capital to Grow Your Company

The CapitalTech
Rocket Ship
Capital Plan



Unlocking Global Capital for Business Growth

- The global financial market offers unprecedented funding opportunities.

- Businesses need a strategic approach to attract and secure capital.

- CapitalTech provides a compliant, scalable, and innovative solution.

Introducing the Rocket Ship Capital Plan

- A structured approach to securing and managing capital.

- Aligning investor expectations with business objectives.

- Revenue-sharing agreements, preferred equity, and debt to fuel growth.



Key Components of the Plan



1. Customized Capital Solutions



2. Investor Attraction Strategies



3. Regulatory Compliance



4. Revenue-Linked Model



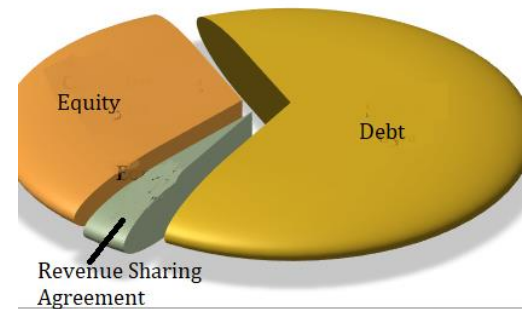
5. Tokenization & Liquidity



6. Strategic Growth Support



Capital Stack



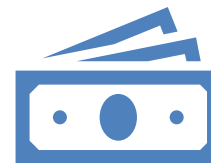
Customized Capital Solutions



- Bridge Loans for immediate liquidity.

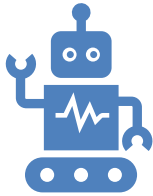


- Preferred Equity for long-term alignment.

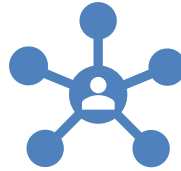


- Revenue-Sharing to ensure success-based compensation.

Investor Attraction Strategies



- Utilizing AI-driven digital marketing.



- Accessing CapitalTech's investor network.



- Enhancing visibility through strategic partnerships.

Ensuring Regulatory Compliance



- Introductions to Regulation D 506(c) and Regulation S capital providers.



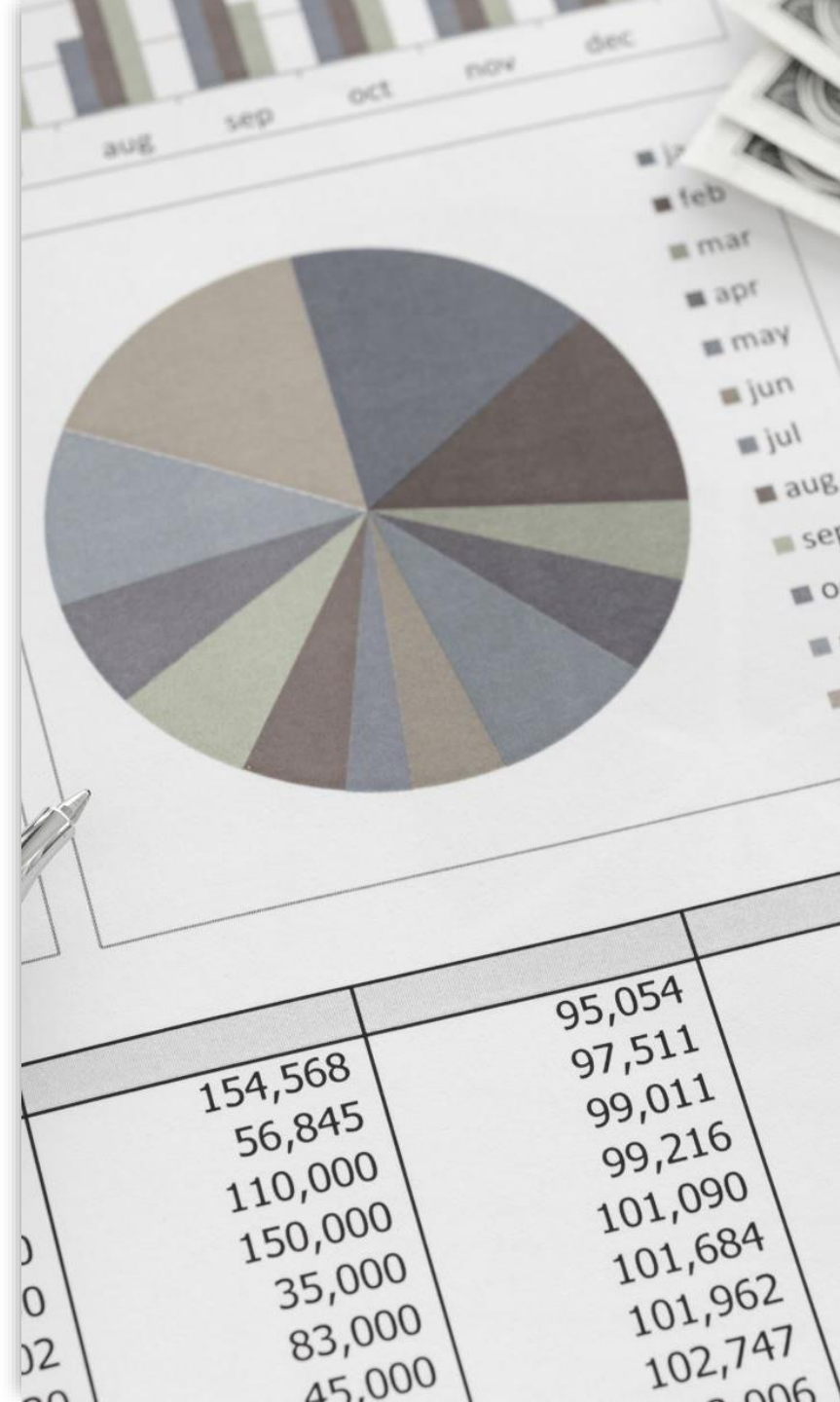
- Full compliance support to mitigate legal risks.



- Transparent reporting and disclosure processes.

Revenue-Linked Compensation Model

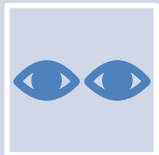
- - CapitalTech earns a percentage of future revenue, not upfront fees.
- - Encourages long-term partnership and growth focus.
- - Ensures mutual success and alignment of interests.



Tokenization & Liquidity



- Tokenization allows fractional ownership and secondary market trading.



- Improves transparency and investor confidence.



- Blockchain ensures secure and immutable record-keeping.

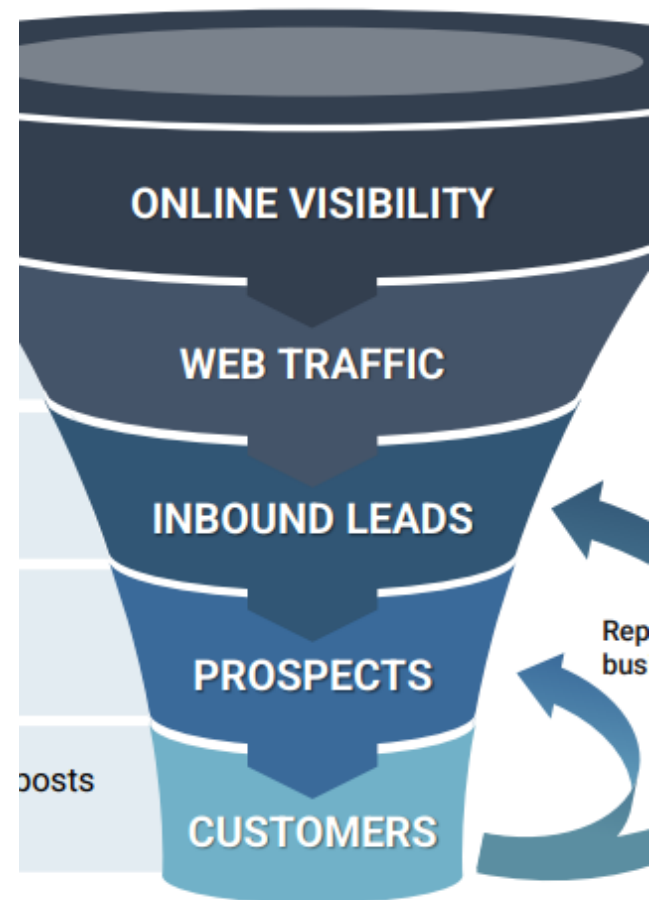
Strategic Growth & Expansion Support

- INVESTOR
RELATIONS AND
REPORTING.

- OPERATIONAL
EFFICIENCY
CONSULTING.

- SCALING
STRATEGIES FOR
LONG-TERM
SUSTAINABILITY.

**Sales and
Marketing**





How to Get Started

1. Initial
consultation to
assess needs.

2. Customized
capital strategy
development.

3. Execution
and ongoing
support.

Contact Us



Email: kmeyer@capitaltechlp.com



Phone: +1 954 560-6798



Website: www.capitaltechlp.com